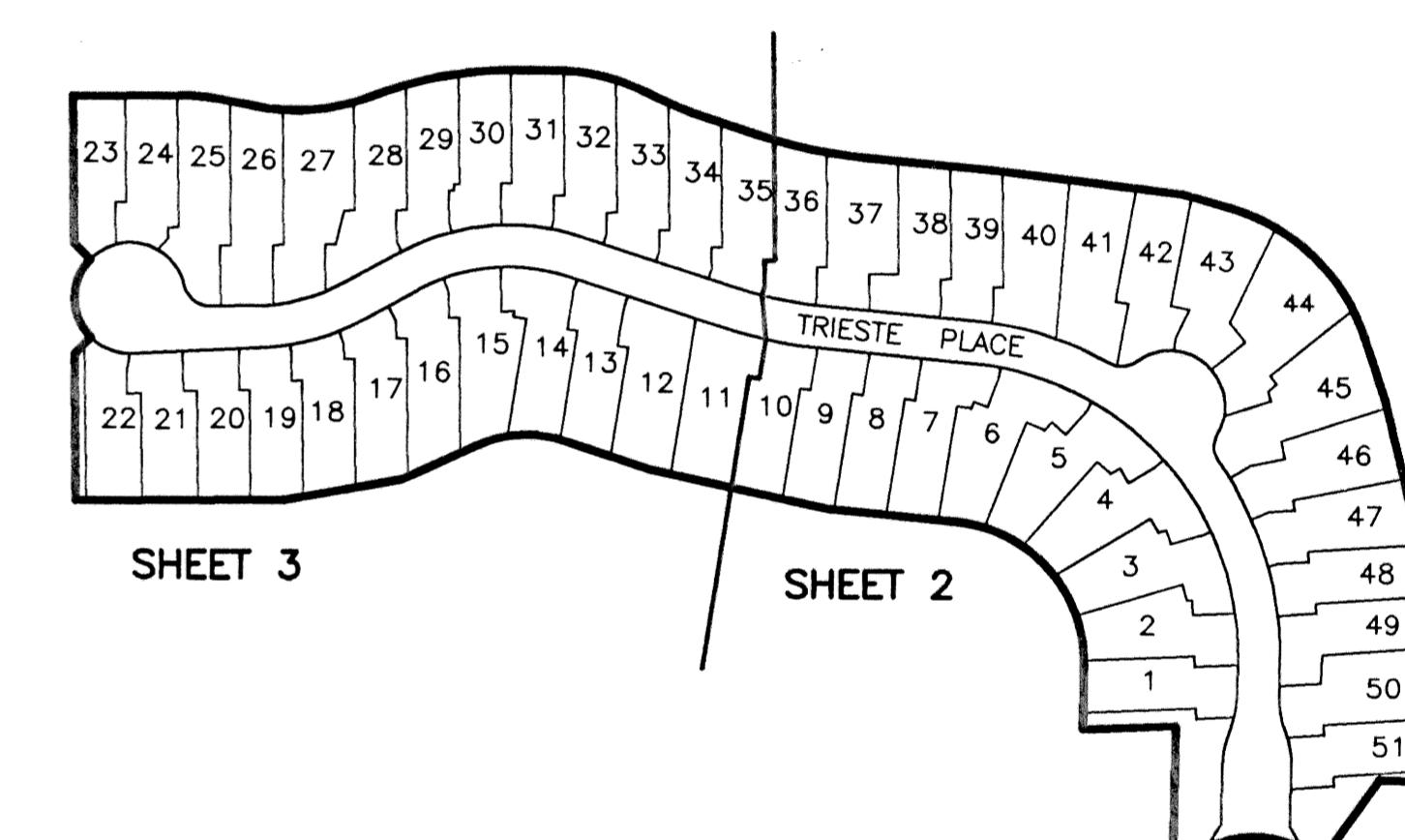
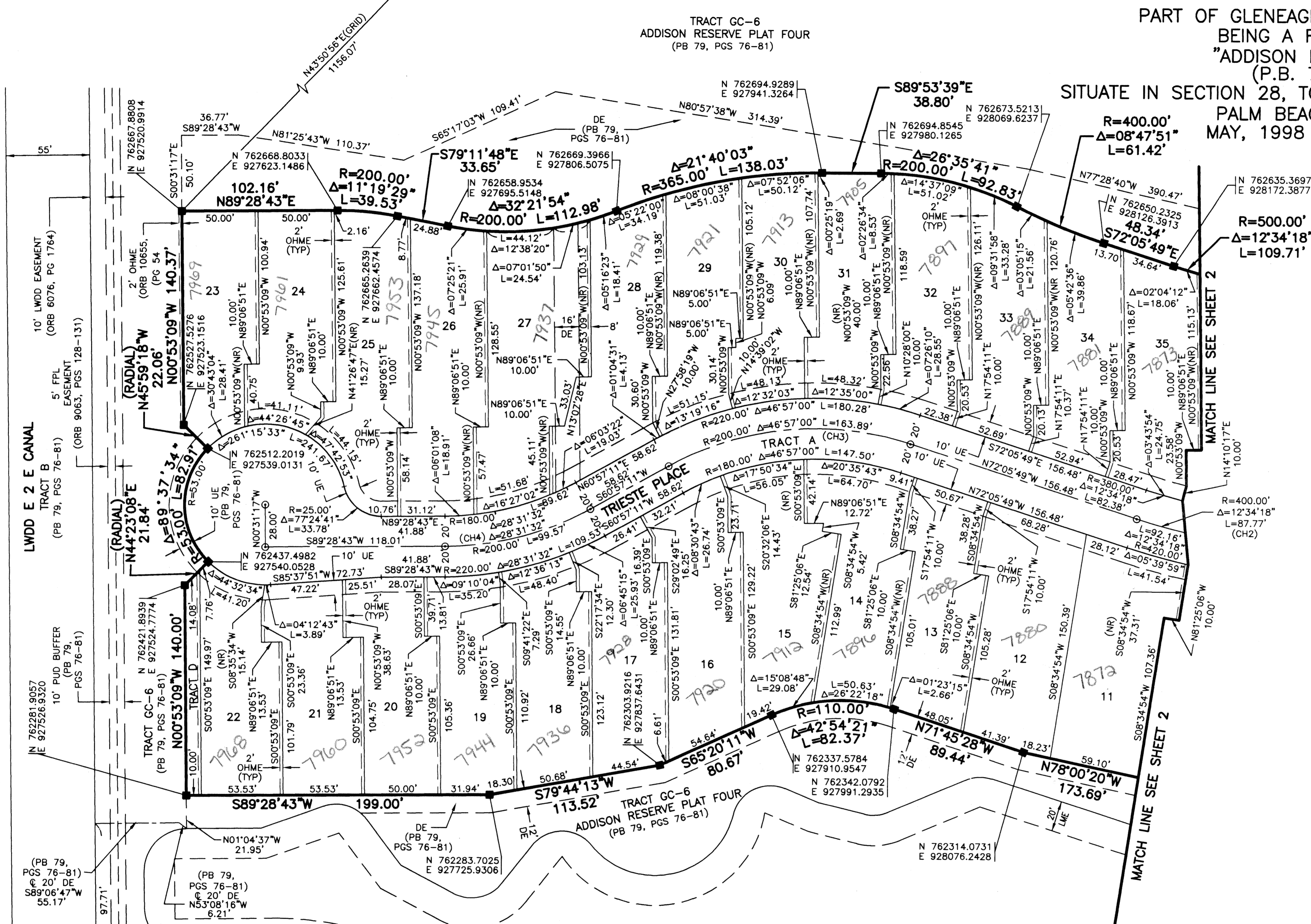
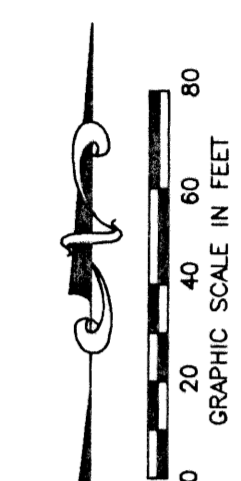


ADDISON RESERVE PARCEL THIRTEEN

PART OF GLENEAGLES/POLO CLUB WEST P.U.D.
BEING A REPLAT OF TRACT 13
"ADDISON RESERVE PLAT FOUR"
(P.B. 79, PGS. 76-81)
SITUATE IN SECTION 28, TOWNSHIP 46 SOUTH, RANGE 42 EAST
PALM BEACH COUNTY, FLORIDA
MAY, 1998 SHEET 3 OF 3

STATE OF FLORIDA
COUNTY OF PALM BEACH
THIS PLAT WAS FILED FOR
RECORD _____ DAY OF _____
AD, 1998 AND DULY RECORDED
IN PLAT BOOK _____ ON PAGES
_____ AND _____
DOROTHY H. WILKEN, CLERK
BY: _____, D.C.

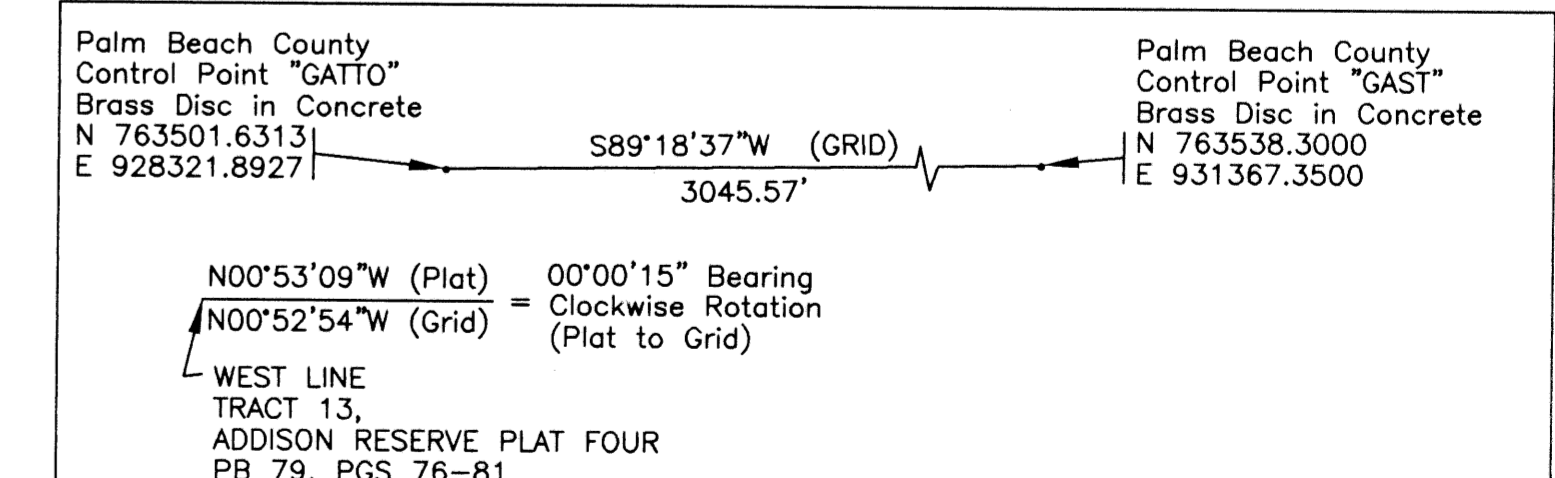
CIRCUIT COURT SEAL



SHEET LOCATION MAP
NOT TO SCALE

NOTES:

1. THE COORDINATES SHOWN HEREON ARE STATE PLANE GRID COORDINATES ACCORDING TO THE TRANSVERSE MERCATOR PROJECTION OF THE FLORIDA EAST ZONE, N.A.D. 83, PER THE 1990 ADJUSTMENT.
2. THE LINEAR DIMENSIONS SHOWN HEREON ARE GROUND DISTANCES IN U.S. FEET AND DECIMAL PARTS THEREOF.
3. THE GROUND DISTANCE TO GRID DISTANCE SCALE FACTOR IS 1.0000338 (GROUND DISTANCE X SCALE FACTOR = GRID DISTANCE).
4. ALL LINES WHICH INTERSECT CURVES ARE RADIAL TO THOSE CURVES UNLESS OTHERWISE NOTED.



WATER MANAGEMENT TRACT LK-25 ADDISON RESERVE PLAT FOUR (PB 79, PGS 76-81)

CHORD TABLE

CH#	BEARING	DISTANCE
2	N78°22'58"W	87.59'
3	S84°25'41"W	159.34'
4	S75°12'57"W	98.55'

- LEGEND**
- BE BUFFER EASEMENT
 - Δ CENTRAL (DELTA) ANGLE
 - CH CHORD
 - DE DRAINAGE EASEMENT
 - FPL FLORIDA POWER & LIGHT ARC LENGTH
 - LAE LIMITED ACCESS EASEMENT
 - LE LANDSCAPE EASEMENT
 - LME LAKE MAINTENANCE EASEMENT
 - LMAE LAKE MAINTENANCE ACCESS EASEMENT
 - LWDD LAKE WORTH DRAINAGE DISTRICT NON-RADIAL OVERHANG AND MAINTENANCE EASEMENT
 - (NR) OFFICIAL RECORD BOOK
 - ORB PLAT BOOK
 - PB PAGE(S)
 - PUD PLANNED UNIT DEVELOPMENT
 - R RADIUS
 - (TYP) TYPICAL
 - UE UTILITY EASEMENT
 - PERMANENT REFERENCE MONUMENT
 - FOUND PLS# 4763
 - PERMANENT REFERENCE MONUMENT
 - ◆ SET PLS# 4763
 - SET PLS# 4763
 - CENTERLINE

THIS INSTRUMENT WAS PREPARED BY MARY HANNA CLODFELTER, P.S.M. IN THE OFFICES OF MOCK, ROOS & ASSOCIATES, INC., 5720 CORPORATE WAY, WEST PALM BEACH, FLORIDA 33407.

SCALE: 1" = 40'
P.A. NO.: 94182.13
DATE: MAY, 1998
DRAWING NO. 46-42-28-165

MOCK • ROOS
ENGINEERS • SURVEYORS • PLANNERS
5720 Corporate Way, West Palm Beach, Florida 33407
(561) 683-3113, Fax 478-7248

SHEET 3 OF 3
ADDISON RESERVE PARCEL THIRTEEN
PART OF GLENEAGLES/POLO CLUB WEST P.U.D.
BEING A REPLAT OF TRACT 13
"ADDISON RESERVE PLAT FOUR"
(P.B. 79, PGS. 76-81)
SITUATE IN SECTION 28, TOWNSHIP 46 SOUTH, RANGE 42 EAST
PALM BEACH COUNTY, FLORIDA

ADDISON RESERVE PARCEL THIRTEEN
FLOOD MAP # 215A
ZONING RTS/ISE
ZIP CODE 33496
ADDISON RESERVE

REV: 09-24-98
CAD FILE: TWKADD\ADDIRP45